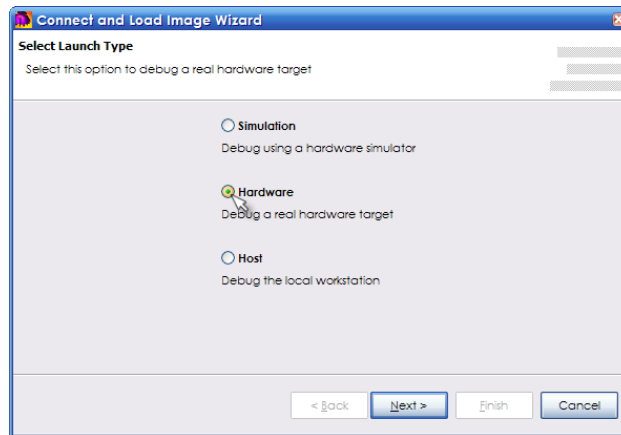


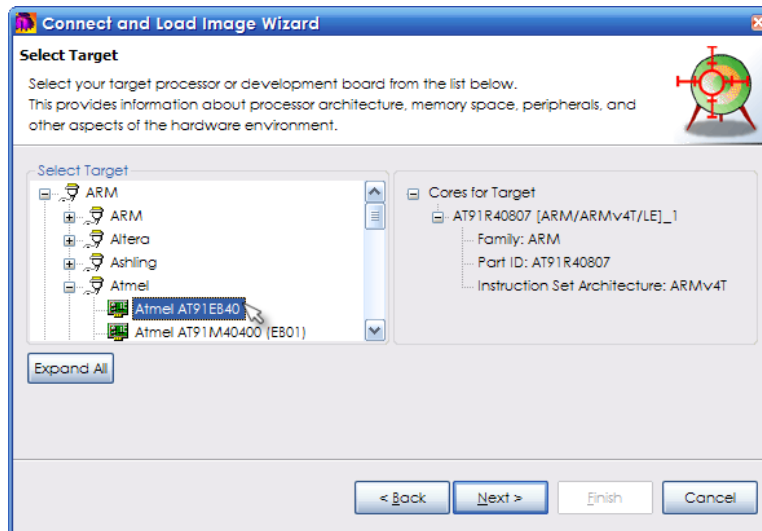
Nucleus EDGE Debugger Target Selection Use-case

Nucleus EDGE uses a wizard to select a target. The wizard creates an Eclipse launch configuration for connecting to the target.

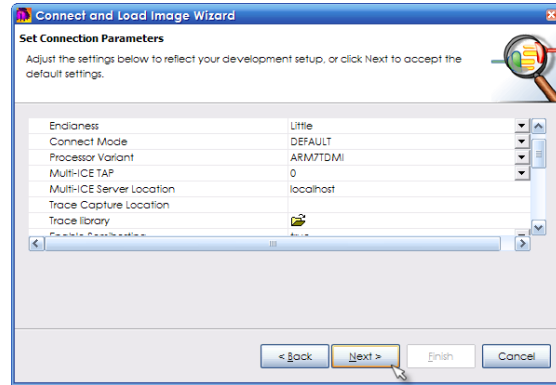
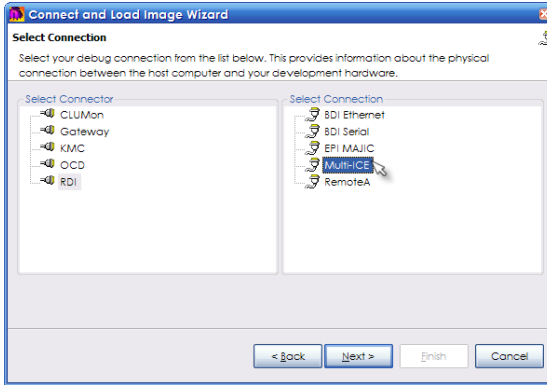
On the first page of wizard, the user selects the type of target that will be connected to. This is basically just a filter for the target list.



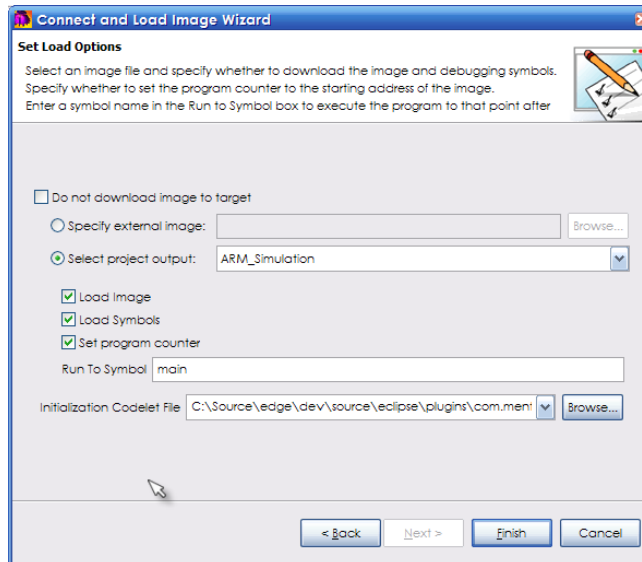
On the next page of the wizard, the user selects the target. The list is composed from a collection of target definition .xml files. These files define cores, registers, peripherals, memory layout, and other target attributes. Currently, these files must be manually edited, but we are working on a target editor with an interface similar to the PDE plug-in manifest editor along with associated 'New' wizards.



On the next page of the wizard, the user selects and configures the 'transport' that will be used in target connection.



On the next page of the wizard, the user selects options for loading images to the various target cores.



When the wizard completes, an Eclipse launch configuration is created. The configuration has tabs for editing connection parameters and image load options.

